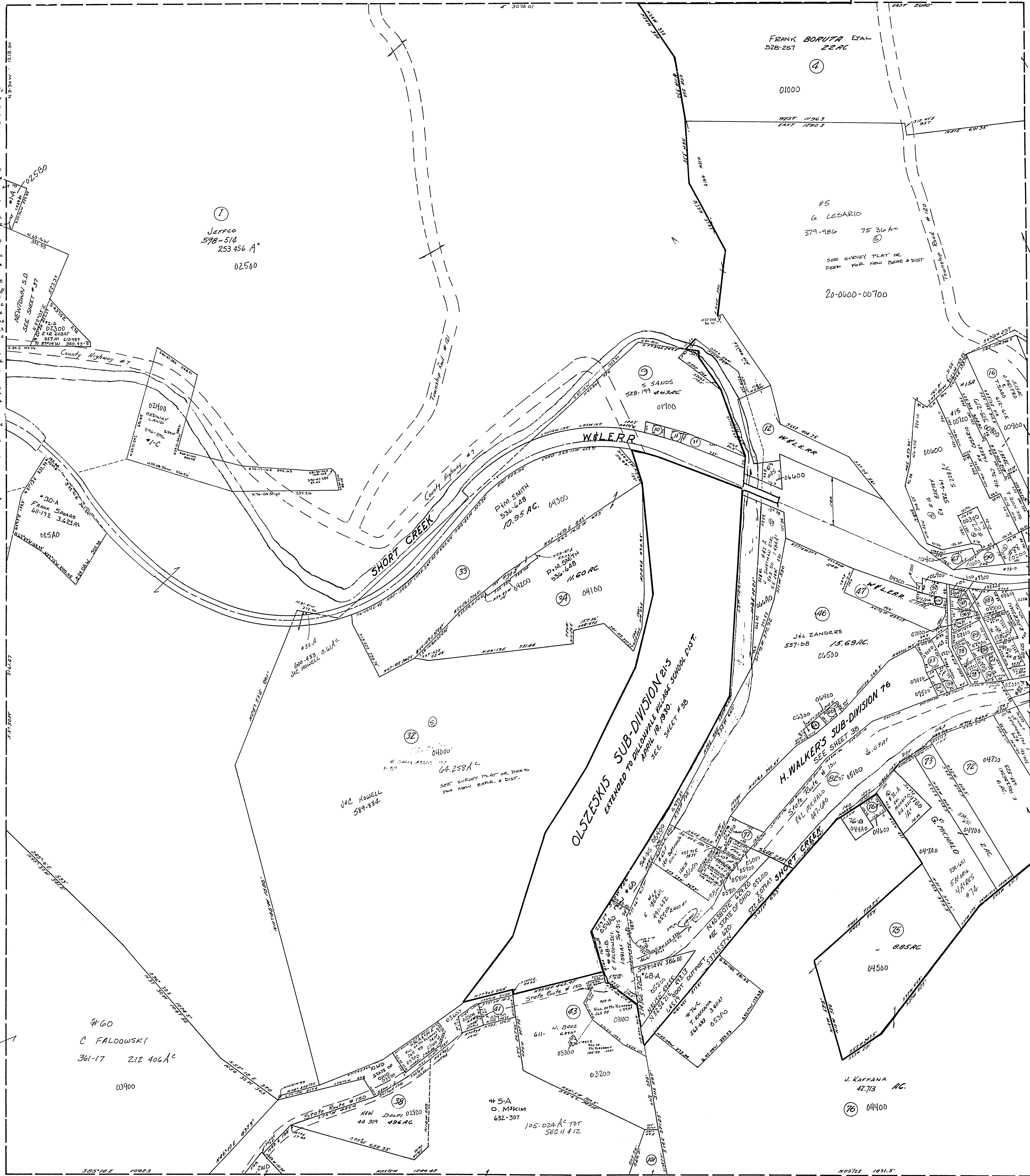


20-1200-

#10	MADIO ROSSINI	371-303	11.4A
#11	MADIO ROSSINI	371-303	27.4A
#22	Y BARTEK	305-705	0.462A
#20	STATE OF OHIO	376-101	1.370A
#26	STATE OF OHIO	535-19-21-22	7.5A
#27	STATE OF OHIO	535-19-21-23	7.7A
#40	STATE OF OHIO	535-19-21-23	7.7A
#41	LEON F. MILLER	287-457	4.4A
#41A	J WHITE	49-236	15.4A
#42	P.A. HOLUBECK	200-57	15.4A
#43	FRANK ROE	610-272	0.456A
#44A	D. PERSIANI	310-442	15.4A
#44	S.M. PERSIANI	334-574	1.23A
#67	E. ZERLA TR	112-326	0.25A
#84A	STATE OF OHIO	237-289	1.41A
#74A	J.D. HUGH	520-689	3.0A
#75	W. THOMPSON	210-806	48.4A
#78	D. PERSIANI	310-442	15.4A
#83	J. SCHUBER	370-446	0.931A
#84	M. MICHALO	341-591	14.4A
#85A	MARY KAFANA	181-741	14.4A
#88	ENG. DICENZO	623-719	48.4A
#88A	G. WARNE ETAL	141-657	0.353A
#88B	S.M. PERSIANI	334-574	1.23A
#89	C. ANTONACCI	340-846	2.7A
#89A	C. ANTONACCI	248-819	11.4A
#90	V. BARTEK	572-419	3.8A
#92	V. GODDARD	612-500	1.75A
#94	H. PIETRO	579-244	0.25A
#95	M.J. BARTEK	111-861	12.1A
#97	R.J. BARTEK	111-861	14.4A
#98	L.K. PECK	351-707	15.4A
#99	JOS. MILMORNE	277-395	12.4A
#1A	R. BISCARO	619-146	10.29A
#101	M.M. SWADARO	322-428	20.4A
#102A	R. LUTZ	400-393	92.1A
#104	R. KASAL	478-036	15.4A
#105	MT PLEASANT TWP 72	2.62-436	14.4A
#106	THE VILLAGE OF MT PLEASANT	322-225	0.207A
#107	V.M. BETTESCHI	332-145	15.4A
#108	J.M. BETTESCHI	332-145	19.1A
#109	J.M. BETTESCHI	134-448	28.1A
#110	J.M. BETTESCHI	337-149	2.63A
#12	MARY F. DOLY	318-393	1.51A
#45	J. SARTANA ETAL	513-50	0.196A
#92A	R.P. KOUTSKY	49-739	0.154A
#62	R.S. PERSIANI	554-705	0.15A
#68	J. HADZY	623-373	0.979A
#68B			1.51A
#76A	J. KAFANA	401-726	0.262A



NOTE A
THIS 1.685A TRACT IS ONLY
IN SEC 12 THE MAP IS
DRAWN WRODS

- #88 G. DICENZO 623-719 48.4A
- #47A L.J. WHITE 51-225 0.15A
- #73-D J.B. CESARIO 73-645 1.42A
- #100 J. GODDARD 612-500 0.135A

#76-B
KAY
521-304 0.376A

MT. PLEASANT TWP
SECTION 12, T.7, R.3.
SCALE: 1"=200'